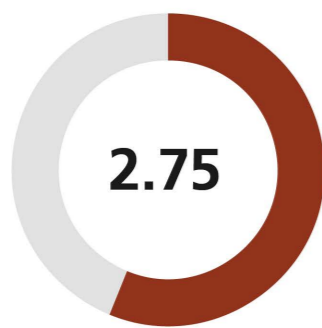
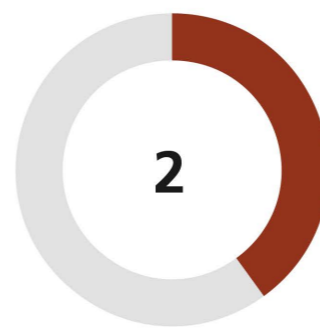


Academic Probation

A student can be placed on academic probation when he/she is not making the academic progress required for graduation. He/she is going to be given this notification because his/her cumulative GPA is lower than the acceptable minimum.



The cumulative GPA is less than 2.75 out of 5 for the College of Dentistry and Architecture, Engineering, and Design Colleges.



The cumulative GPA is lower than 2 out of 5 for the remaining colleges.

Academic Dismissal

Exceeding the study period

When the graduation requirements aren't fulfilled within a maximum period of half of the period stipulated for graduation in addition to the standard duration of the program.

The student is dismissed from the semester system

When he/she is put on academic probation for three consecutive semesters.

The student is dismissed from the annual system (first years in the College of Medicine)

If he/she is unable to raise his/her cumulative GPA to the minimum after being put on academic probation and granted a full academic year.

What are the consequences of an academic probation?



The probation semester is calculated within the study duration and maximum period for graduation*.



An academic probation reflects bad performance in the academic transcript and may lead to dismissal from the university.



The remuneration is suspended during the probation semester.



The summer semester is not counted among the semesters in which students are placed on probation.

* **Study duration** | The number of academic years or semesters that are counted within the period spent as a student according to the program's study plan.

* **Maximum period for graduation** | Students must complete the graduation requirements within a maximum period of half of the period stipulated for their graduation in addition to the standard duration of the program.



IAU_AR



0133332222



bserv@iau.edu.sa

How to Register for Students on Academic probation



Students who have been placed on academic probation for the first time

The student begins with enrolling in the course Academic Advising 1, then completes the enrollment of the courses available in that semester.



Students who have been placed on academic probation for the second time

Attended Advising Program 1

The student enrolls in the course Academic Advising 2, then enrolls in the courses available in that semester.

Did not attend Advising Program 1

The student must visit the Academic Affairs office at the college to coordinate with the University's Counseling Center and attend Advising Program 1, then enroll in the course Academic Advising 2 and complete the enrollment of the remaining courses.



Students who have been placed on academic probation for the third time

Attended Advising Program 2

The student enrolls in the course Academic Advising 3, then enrolls in the courses available in that semester.

Did not attend Advising Program 2

The student must visit the Academic Affairs office at the college to coordinate with the University's Counseling Center and attend Advising Program 2, then enrolls in the course Academic Advising 3 and complete the enrollment of the remaining courses.



Students who received an additional chance for the following semester after being suspended for the current semester

They must attend the Advising Program offered during the current semester.



Students who received an additional chance in the current semester

Attended Advising Program 3

The student enrolls in the course Academic Advising 3, then enrolls in the courses available in that semester.

Did not attend Advising Program 3

The student must visit the Academic Affairs office at the college to coordinate with the University's Counseling Center and attend Advising Program 3, then enrolls in the course Academic Advising 3 and complete the enrollment of the remaining courses.

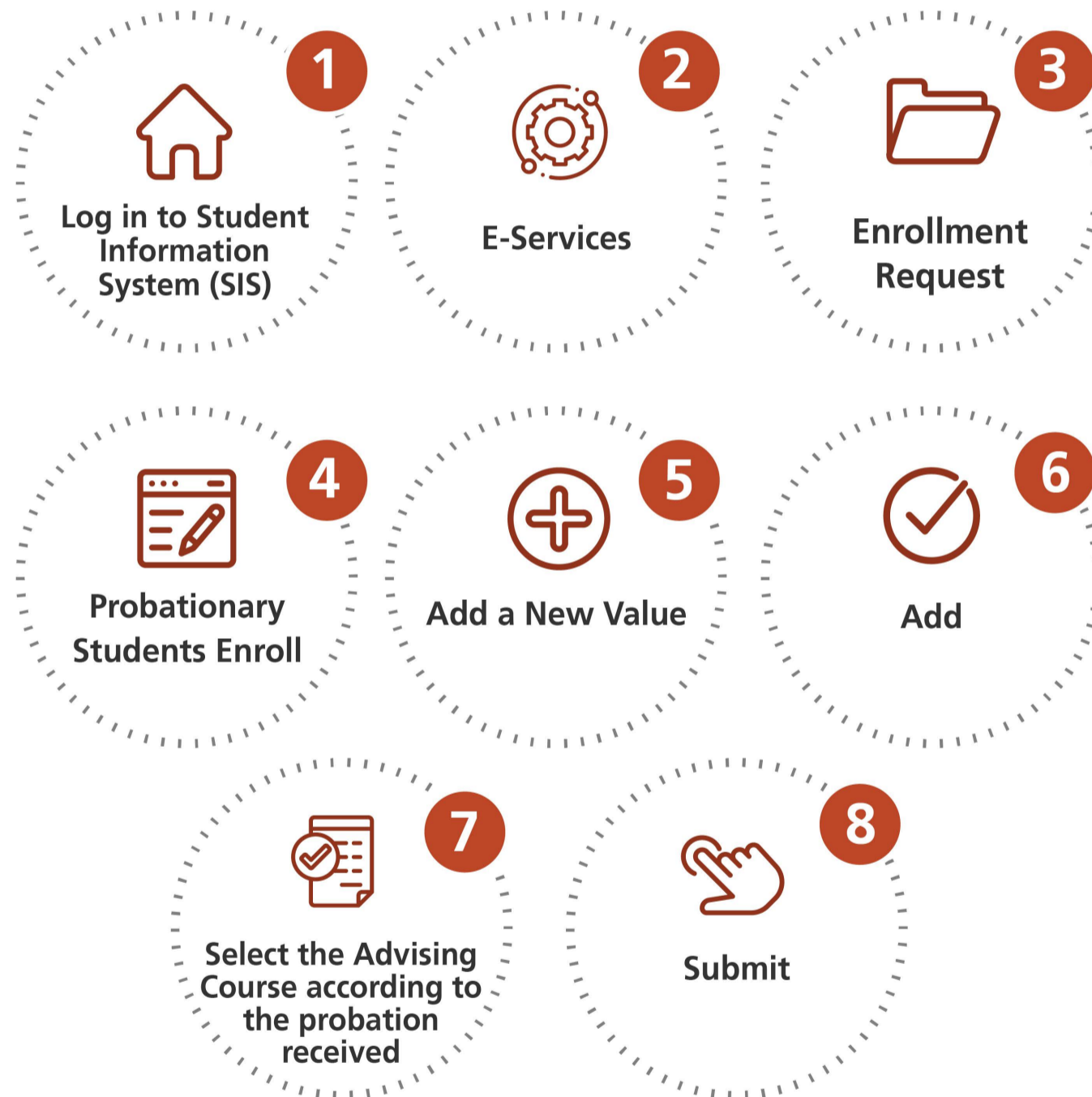


Students who are dismissed from the university

They must submit an electronic Clearance form to the University.



Steps to enroll in the Academic Advising Course



Your commitment to attend Academic Advising courses is a requirement to enroll into your courses each semester



IAU_AR



0133332222



bserv@iau.edu.sa

