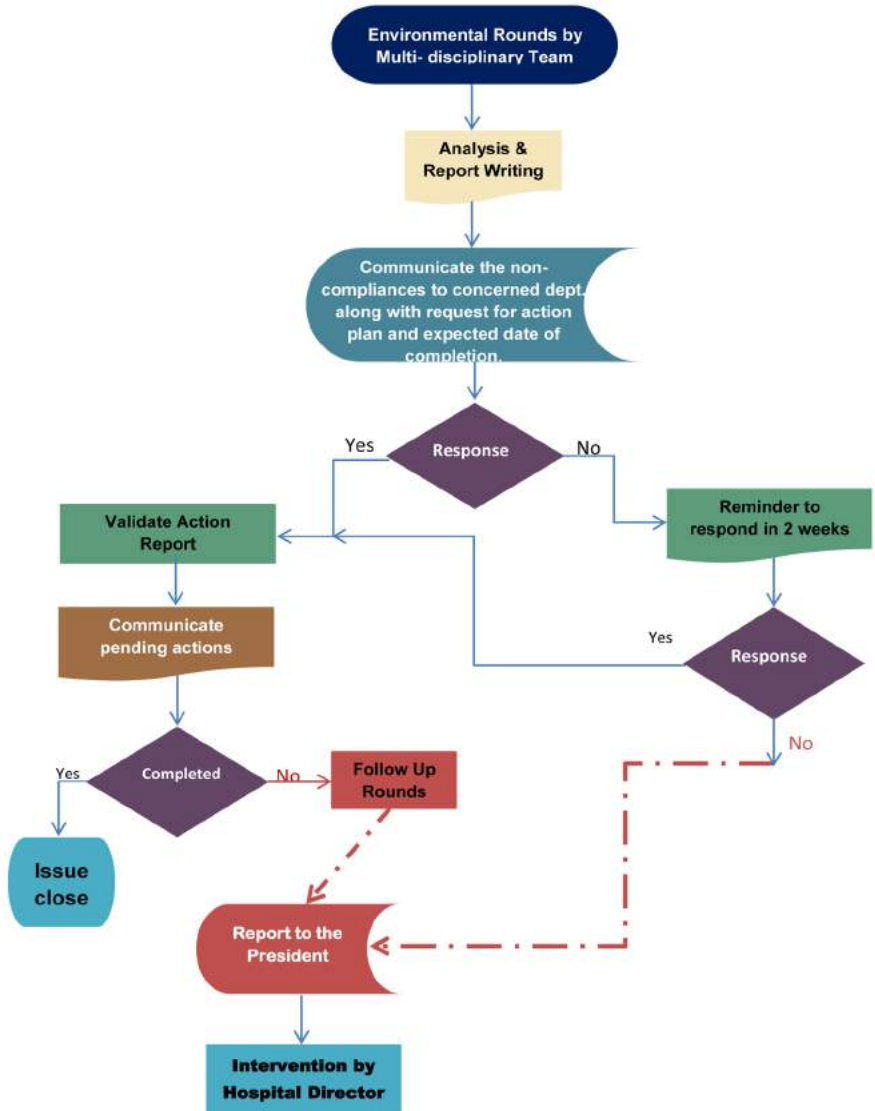


Communication flow for Environmental Surveillance activities



Environmental Health & Safety (EHS) rounds

- i A periodic appraisal to ensure that all areas of the Hospital are maintained in a clean, safe, and sanitary manner including mechanisms to identify evident risks within the environment of care at the Hospital.
- ii A multidisciplinary focus group that consists of select representatives from the patient service and support departments with primary and collaborative responsibility to ensure safe, functional and effective environment for patients, staff and other individuals. This is crucial to preventing or minimizing risks in the environment of care.
- iii The EHS team comprises department leaders from Environmental Safety, Safety Department, Maintenance, Biomedical Engineering, Housekeeping, Nursing, Infection Control & Risk Management
- iv Members of the EHS team work collaboratively to ensure the success of FMS programs.
- v All areas at the Hospital are subjected to unannounced inspections using a predefined checklist periodically as per an established schedule.
- vi Detailed report on all observations and recommended action following the inspection will be communicated, with evidence whenever available, to the concerned department in order to get compliance comply with environmental safety requirements.
- vii It is imperative for every department to address the deficiencies, Departments are encouraged to forward an action report to DQS which is used as a follow up tool to track implementations.
- viii Action reports of corrected issues are to be submitted within two weeks.
- ix A Reminder will be sent to the concerned department if an action report is not received within two weeks.