

Intravitreal Injection

What is Intravitreal Injection?

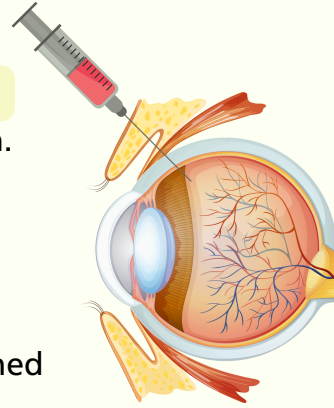
It is a procedure by injecting by the medicine directly into the eye under surface anesthetic drops.

What are intravitreal injections used for?

- Macular edema due to diabetes or vein occlusion.
- Other retinal vascular diseases.

How is the Injection Performed?

- The entire procedure takes 10-15 minutes.
- The eyelids and the skin around the eye are cleaned with an antiseptic solution.
- Eye speculum is placed to keep the eye open during the procedure.
- The injection will be inserted into the white of the eye "sclera".



What are the possible side effects or complications?

- Itching or a foreign body sensation in the eye due to the antiseptics.
- Floaters usually disappear in the first few days after the injection.
- A subconjunctival hemorrhage at the injection site is not concerning and typically resolves within 10 days.
- Corneal abrasion.
- Increased intraocular pressure.
- Severe and rare complications include bacterial endophthalmitis, bleeding, retinal detachment, and central retinal artery occlusion.